

**FOR IMMEDIATE RELEASE**

July 18, 2025

## Contact:

Mathew Barewicz, E & LMI Director, Department of Labor  
802-828-4153 | [mathew.barewicz@vermont.gov](mailto:mathew.barewicz@vermont.gov)

## Vermont's Unemployment Rate Held Steady at 2.6 Percent in June

Today, the Vermont Department of Labor released data on the Vermont economy for the time period covering June 2025. According to household data, the seasonally-adjusted statewide unemployment rate for June was 2.6 percent. This reflects no change from the prior month's revised estimate. The civilian labor force participation rate was 64.9 percent in June, a decrease of one-tenth of one percentage point from the prior month's revised estimate.

### *Commissioner's Message*

"Preliminary data from June shows that Vermont's labor force has declined for the fifth consecutive month. While the decrease is less than one percent, it reflects a broader trend across Vermont and the nation: an aging workforce.

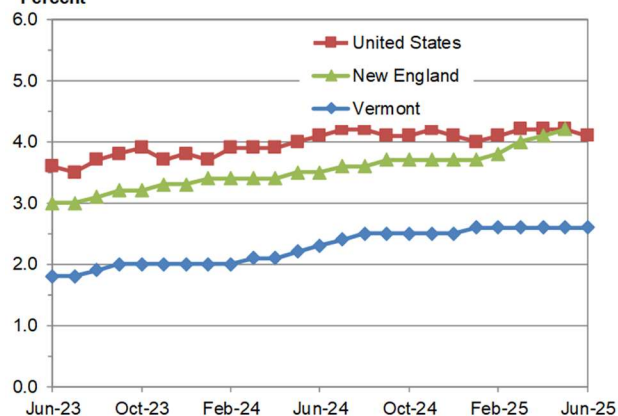
That's why our work at the Department of Labor is more critical than ever. We're here to support job seekers at every stage of life, from helping young people gain experience through summer jobs to partnering with community organizations who specialize in opportunities for older workers.

Whether you're just starting or planning your next career move, your local Department of Labor office is here to help. Learn more at [labor.vermont.gov](https://labor.vermont.gov)."

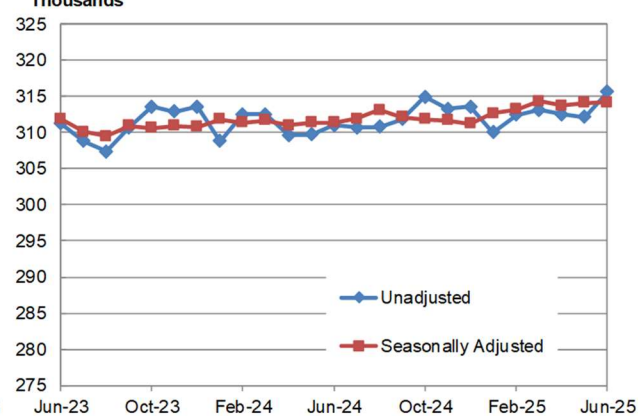
- Kendal Smith, Interim Commissioner

**Chart 1. Unemployment Rate, seasonally adjusted**

Percent

**Chart 2. Vermont Nonfarm Payroll Employment**

Thousands



## *State of Vermont Overview*

The Vermont seasonally-adjusted unemployment rate remained at 2.6 percent in June. The comparable United States rate in June was 4.1 percent, a decrease of one-tenth of one percentage point from the revised May estimate. The seasonally-adjusted Vermont data for June show the Vermont civilian labor force decreased by 591 from the prior month's revised estimate (see Table 1). The number of employed persons decreased by 434 and the number of unemployed persons decreased by 157. No changes were statistically significant in the seasonally-adjusted series.

The June unemployment rates for Vermont's 14 counties ranged from 2.2 percent in Addison and Windsor Counties to 2.9 percent in Orleans County (note: county unemployment rates are not seasonally-adjusted – see Table 2). For comparison, the June unadjusted unemployment rate for Vermont was 2.4 percent, an increase of two-tenths of one percentage point from the revised unadjusted May level and an increase of one-tenth of one percentage point from a year ago.

\*\*\* BLS note on LAUS geography and data changes in 2025: <https://www.bls.gov/lau/geography-and-data-changes-in-2025.htm> \*\*\*

## *Analysis of Job Changes by Industry*

### **Seasonally-Adjusted (Table 3)**

The seasonally-adjusted data for June reported an increase of 100 jobs from the revised May data. There was a decrease of 500 jobs between the preliminary and the revised May estimates due to the inclusion of more data. The seasonally-adjusted over-the-month changes in June varied at the industry level. The industries with a notable increase were Administrative & Waste Services (+300 jobs or +2.1%) and Other Services (+200 jobs or +1.9%). The industry with a notable decrease was Accommodation & Food Services (-400 jobs or -1.3%).

### **Not-Seasonally-Adjusted (Table 4)**

The preliminary 'not-seasonally-adjusted' jobs estimates for June showed an increase of 3,500 jobs when compared to the revised May numbers. As with the seasonally-adjusted data, this over-the-month change is from the revised May numbers which experienced a decrease of 500 jobs from the preliminary estimates. The broader economic picture can be seen by focusing on the over-the-year changes in this data series. As detailed in the preliminary not-seasonally-adjusted June data, Total Private industries increased by 4,100 jobs (+1.6%) over the year and Government (including public education) employment increased by 500 jobs (+0.9%) in the past year.

---

**The Unemployment and Jobs Report for July is scheduled to be released on Tuesday, August 19, 2025, at 10:00 a.m.**



**Table 1. Vermont Labor Force Estimates, seasonally adjusted**

	June 2025	May 2025	June 2024	Change From:	
				May 2025	June 2024
Civilian Labor Force	354,331	354,922	356,039	-591	-1,708
Employed	345,220	345,654	347,900	-434	-2,680
Unemployed	9,111	9,268	8,139	-157	972
Unemployment Rate (%)	2.6	2.6	2.3	0.0	0.3

Vermont's labor force, employment and unemployment statistics are produced from a combination of a Statewide survey of households and statistical modeling. The data are produced by the Local Area Unemployment Statistics Program (LAUS), a cooperative program with the U.S. Department of Labor, Bureau of Labor Statistics ([www.bls.gov/lau](http://www.bls.gov/lau)) and the Vermont Department of Labor ([www.vtmi.info/laus.cfm](http://www.vtmi.info/laus.cfm)).

**Table 2. Vermont Counties, Labor Force Estimates**  
not seasonally adjusted

County	Civilian Labor Force	June 2025		Unemployment Rate <sup>1</sup> (%)		
		Employed	Unemployed	Jun-25	May-25	Jun-24
Vermont Total	356,530	347,847	8,683	2.4	2.2	2.3
Addison	21,743	21,268	475	2.2	1.8	2.0
Bennington	18,265	17,778	487	2.7	2.5	2.7
Caledonia	16,504	16,095	409	2.5	2.0	2.4
Chittenden	101,304	98,969	2,335	2.3	1.8	2.1
Essex	2,930	2,851	79	2.7	2.3	2.8
Franklin	27,394	26,768	626	2.3	2.0	2.2
Grand Isle	4,104	4,002	102	2.5	2.2	2.0
Lamoille	15,282	14,881	401	2.6	2.7	2.4
Orange	16,530	16,142	388	2.3	2.1	2.0
Orleans	13,983	13,576	407	2.9	2.9	2.8
Rutland	29,987	29,167	820	2.7	2.6	2.7
Washington	33,560	32,730	830	2.5	2.2	2.3
Windham	24,734	24,089	645	2.6	2.5	2.5
Windsor	30,209	29,530	679	2.2	2.2	2.1

<sup>1</sup>Rate is an estimate for number of unemployed divided by total labor force, expressed as a percent.

Source: Local Area Unemployment Statistics Program (LAUS) produced by the Vermont Department of Labor ([www.vtmi.info/laus.cfm](http://www.vtmi.info/laus.cfm)) in cooperation with the U.S. Bureau of Labor Statistics ([www.bls.gov/lau](http://www.bls.gov/lau)).



**Table 3. Vermont Nonfarm Payroll Employment, seasonally adjusted (thousands)**

NAICS Industry	Jun-25	May-25	Jun-24	Change From:		% Change From:	
	Prelim	Revised	Revised	May-25	Jun-24	May-25	Jun-24
<b>Statewide, Total Nonfarm</b>	<b>314.2</b>	<b>314.1</b>	<b>311.4</b>	<b>0.1</b>	<b>2.8</b>	<b>0.0</b>	<b>0.9</b>
<b>Total Private</b>	<b>257.5</b>	<b>257.7</b>	<b>255.4</b>	<b>-0.2</b>	<b>2.1</b>	<b>-0.1</b>	<b>0.8</b>
Mining, Logging and Construction	16.6	16.7	16.9	-0.1	-0.3	-0.6	-1.8
Mining & Logging	0.8	0.8	0.8	0.0	0.0	0.0	0.0
Construction	15.8	15.9	16.1	-0.1	-0.3	-0.6	-1.9
Manufacturing	26.7	26.9	27.6	-0.2	-0.9	-0.7	-3.3
Durable Goods	15.7	15.8	16.3	-0.1	-0.6	-0.6	-3.7
Non-Durable Goods	11.0	11.1	11.3	-0.1	-0.3	-0.9	-2.7
Trade, Transportation and Utilities	52.7	52.8	52.2	-0.1	0.5	-0.2	1.0
Wholesale Trade	8.8	8.8	8.8	0.0	0.0	0.0	0.0
Retail Trade	36.1	36.1	35.6	0.0	0.5	0.0	1.4
Trans., Warehousing & Utilities	7.8	7.9	7.8	-0.1	0.0	-1.3	0.0
Information	4.4	4.4	4.6	0.0	-0.2	0.0	-4.3
Financial Activities	11.5	11.5	11.7	0.0	-0.2	0.0	-1.7
Finance & Insurance	8.6	8.5	8.7	0.1	-0.1	1.2	-1.1
Real Estate, Rental & Leasing	2.9	3.0	3.0	-0.1	-0.1	-3.3	-3.3
Professional and Business Services	34.5	34.3	33.3	0.2	1.2	0.6	3.6
Professional & Technical Services	18.1	18.1	17.9	0.0	0.2	0.0	1.1
Administrative & Waste Services	14.4	14.1	13.3	0.3	1.1	2.1	8.3
Education and Health Services	65.3	65.2	64.0	0.1	1.3	0.2	2.0
Private Educational Services	12.9	12.9	12.6	0.0	0.3	0.0	2.4
Health Care & Social Assistance	52.4	52.3	51.4	0.1	1.0	0.2	1.9
Leisure and Hospitality	35.2	35.5	35.0	-0.3	0.2	-0.8	0.6
Arts, Entertainment & Recreation	5.3	5.2	4.9	0.1	0.4	1.9	8.2
Accommodation & Food Services	29.9	30.3	30.1	-0.4	-0.2	-1.3	-0.7
Other Services	10.6	10.4	10.1	0.2	0.5	1.9	5.0
<b>Government</b>	<b>56.7</b>	<b>56.4</b>	<b>56.0</b>	<b>0.3</b>	<b>0.7</b>	<b>0.5</b>	<b>1.3</b>
Federal	6.9	6.9	6.8	0.0	0.1	0.0	1.5
State	18.7	18.6	18.6	0.1	0.1	0.5	0.5
Local	31.1	30.9	30.6	0.2	0.5	0.6	1.6
<b>Burlington-S. Burlington (MSA)</b>	<b>126.6</b>	<b>126.5</b>	<b>124.3</b>	<b>0.1</b>	<b>2.3</b>	<b>0.1</b>	<b>1.9</b>
<b>Total Nonfarm</b>							

Source: Current Employment Statistics Program (CES) produced by the Economic and Labor Market Information Division, Vermont Department of Labor ([www.vtlni.info/ces.cfm](http://www.vtlni.info/ces.cfm)) in cooperation with the U.S. Bureau of Labor Statistics ([www.bls.gov/sae](http://www.bls.gov/sae)).

Estimates are preliminary and subject to revision. See Annual Summary for details.



**Table 4. Vermont Nonfarm Payroll Employment, not seasonally adjusted**

NAICS Industry	Jun-25	May-25	Jun-24	Change From:		% Change From:	
	Prelim	Revised	Revised	May-25	Jun-24	May-25	Jun-24
<b>TOTAL NONFARM</b>	<b>315,600</b>	<b>312,100</b>	<b>311,000</b>	<b>3,500</b>	<b>4,600</b>	<b>1.1</b>	<b>1.5</b>
<b>TOTAL PRIVATE</b>	<b>259,900</b>	<b>256,500</b>	<b>255,800</b>	<b>3,400</b>	<b>4,100</b>	<b>1.3</b>	<b>1.6</b>
<b>GOODS-PRODUCING</b>	<b>44,300</b>	<b>44,100</b>	<b>45,600</b>	<b>200</b>	<b>-1,300</b>	<b>0.5</b>	<b>-2.9</b>
MINING, LOGGING AND CONSTRUCTION	17,400	17,200	17,800	200	-400	1.2	-2.2
Mining & Logging	800	800	800	0	0	0.0	0.0
Construction	16,600	16,400	17,000	200	-400	1.2	-2.4
MANUFACTURING	26,900	26,900	27,800	0	-900	0.0	-3.2
Durable Goods	15,800	15,800	16,400	0	-600	0.0	-3.7
Non-Durable Goods	11,100	11,100	11,400	0	-300	0.0	-2.6
Food Mfg.	5,200	5,200	5,400	0	-200	0.0	-3.7
<b>SERVICE-PROVIDING</b>	<b>271,300</b>	<b>268,000</b>	<b>265,400</b>	<b>3,300</b>	<b>5,900</b>	<b>1.2</b>	<b>2.2</b>
TRADE, TRANSPORTATION AND UTILITIES	53,000	52,800	52,400	200	600	0.4	1.1
Wholesale Trade	8,800	8,800	8,800	0	0	0.0	0.0
Retail Trade	36,300	36,100	35,800	200	500	0.6	1.4
Food & Beverage Retailers	10,000	9,900	9,900	100	100	1.0	1.0
General Merchandise Retailers	3,800	3,700	3,600	100	200	2.7	5.6
Transportation, Warehousing & Utilities	7,900	7,900	7,800	0	100	0.0	1.3
Transportation & Warehousing	6,700	6,700	6,600	0	100	0.0	1.5
Utilities	1,200	1,200	1,200	0	0	0.0	0.0
INFORMATION	4,400	4,400	4,600	0	-200	0.0	-4.3
FINANCIAL ACTIVITIES	11,700	11,500	11,800	200	-100	1.7	-0.8
Finance & Insurance	8,700	8,500	8,700	200	0	2.4	0.0
Real Estate, Rental & Leasing	3,000	3,000	3,100	0	-100	0.0	-3.2
PROFESSIONAL AND BUSINESS SERVICES	35,000	34,400	33,800	600	1,200	1.7	3.6
Professional & Technical Services	18,100	18,000	18,000	100	100	0.6	0.6
Administrative & Waste Services	14,900	14,300	13,800	600	1,100	4.2	8.0
EDUCATION AND HEALTH SERVICES	63,500	65,200	61,900	-1,700	1,600	-2.6	2.6
Private Educational Services	11,000	13,000	10,300	-2,000	700	-15.4	6.8
Colleges and Universities	6,400	7,400	4,900	-1,000	1,500	-13.5	30.6
Health Care & Social Assistance	52,500	52,200	51,600	300	900	0.6	1.7
Ambulatory Health Care Services	17,100	17,000	17,100	100	0	0.6	0.0
Hospitals	15,200	15,100	14,700	100	500	0.7	3.4
Nursing & Residential Care Facilities	6,900	6,900	6,700	0	200	0.0	3.0
Social Assistance	13,300	13,200	13,100	100	200	0.8	1.5
LEISURE AND HOSPITALITY	37,200	33,700	35,400	3,500	1,800	10.4	5.1
Arts, Entertainment & Recreation	6,200	5,200	5,700	1,000	500	19.2	8.8
Accommodation & Food Services	31,000	28,500	29,700	2,500	1,300	8.8	4.4
Accommodation	9,900	8,600	9,900	1,300	0	15.1	0.0
Hotels & Motels	8,200	7,300	8,000	900	200	12.3	2.5
Food Services & Drinking Places	21,100	19,900	19,800	1,200	1,300	6.0	6.6
OTHER SERVICES	10,800	10,400	10,300	400	500	3.8	4.9
<b>GOVERNMENT</b>	<b>55,700</b>	<b>55,600</b>	<b>55,200</b>	<b>100</b>	<b>500</b>	<b>0.2</b>	<b>0.9</b>
Federal Government	6,900	6,900	6,800	0	100	0.0	1.5
State Government Education	7,000	7,100	7,200	-100	-200	-1.4	-2.8
Other State Government	10,100	10,000	9,900	100	200	1.0	2.0
Local Government Education	23,000	23,600	22,800	-600	200	-2.5	0.9
Other Local Government	8,700	8,000	8,500	700	200	8.8	2.4

Source: Current Employment Statistics Program (CES) produced by the Economic and Labor Market Information Division, Vermont Department of Labor ([www.vtmi.info/ces.cfm](http://www.vtmi.info/ces.cfm)) in cooperation with the U.S. Bureau of Labor Statistics ([www.bls.gov/sae](http://www.bls.gov/sae)).

Estimates are preliminary and subject to revision. See Annual Summary for details.

